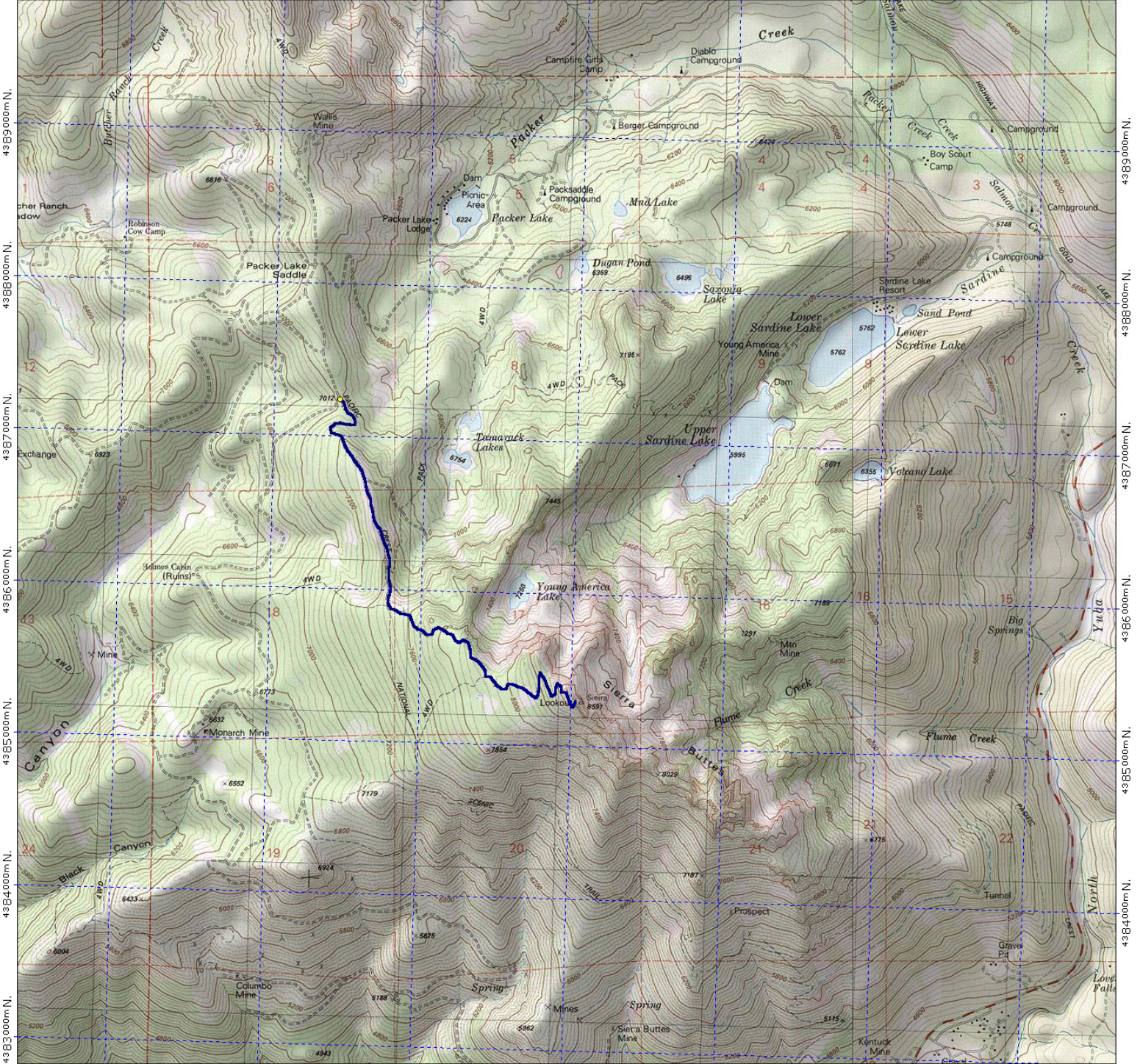


699000m E. 700000m E. 701000m E. 702000m E. 703000m E. 704000m E. WGS84 Zone 10S 705000m E.



699000m E. 700000m E. 701000m E. 702000m E. 703000m E. 704000m E. WGS84 Zone 10S 705000m E.

TN  $\uparrow$  MN  
 $15\frac{1}{2}^\circ$

0 1000 FEET 0 500 1000 METERS

Printed from TOPOI ©2001 National Geographic Holdings (www.topo.com)

